

A PROFITABLE INVESTMENT

Vantage Lemvig Mamme, E-90%

2-1 305 3x 22,010 5.3% 1,164 3.5% 760 91DCR 2,626C
3-2 305 3x 25,340 5.0% 1,279 3.6% 908 90DCR 3,139C
4-4 305 3x 27,440 4.8% 1,316 3.6% 996 84DCR 3,444C
5-8 305 2x 22,970 4.2% 955 3.8% 880 97DCR 2,753C

- 3-2 and 4-4 records both earned Hall of Fame recognition

- 349 registered progeny from five generations

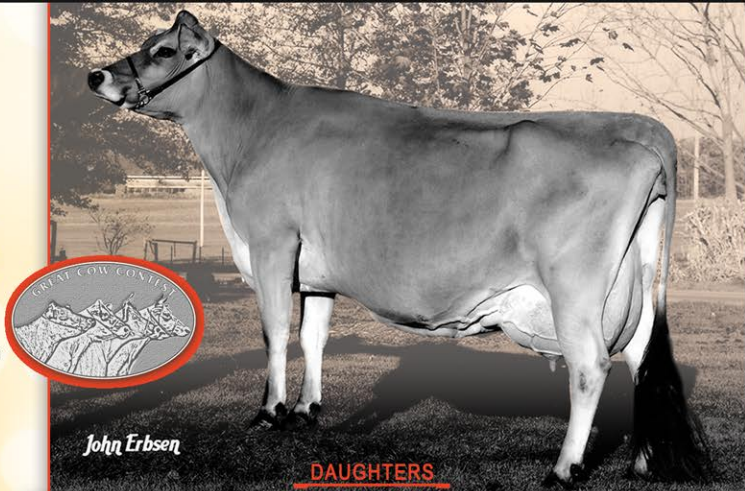
- 24 male descendants in A.I.

- 71 appraised female descendants with 8 Excellent, 49 Very Good and 14 Desirable

- A highly marketable family topping sales including the 2010 and 2011 Bush River & Treasure Chest Combination Sales

- Bred by Vantage Jerseys, PA, and purchased by the partnership of Taylor Jersey Farm and Lynn Lee at the 2005 All American Jersey Sale.

Let "Mamme" have your consideration for the 2015 Great Cow Contest!



TJF/Lee Valentino Mamme 983-ET, E-90%
+24.7 GJUI CDCB: GPTA 1/15 72%R
Owned by Buster Goff, NM



TJF/Lee Action Mamme 847-ET, E-91%
4-4 305 3x 18,530 6.0% 1,100 3.7% 685
Owned by Heartland Jerseys, KS

TJF TAYLOR JERSEY FARM INC.
Royal and Marthell Taylor | Bradley and Carla Taylor

106 CR 5300, Booneville, MS 38829~ taylorjerseyfarm@wildblue.net
662/720-3598 Bradley ~ 662/416-1743 Carla